

GLUCOSE

AMINO ACIDS

FATTY ACIDS AND GLYCEROL

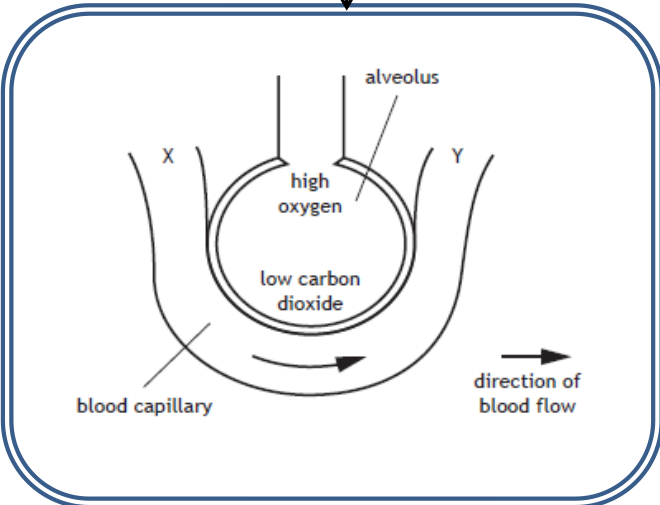
Type of blood vessel that carries out exchange of materials with a cell.

Why is absorption needed?

Diagram of an alveolus. Label it to show movement of oxygen and carbon dioxide, and location of oxygenated/ deoxygenated blood.

Write a sentence describing the fate of each of the following nutrients...

Absorption of Materials



The villus. What substances are transported in...?

List three features of a villus that make it suitable for carrying out its function.

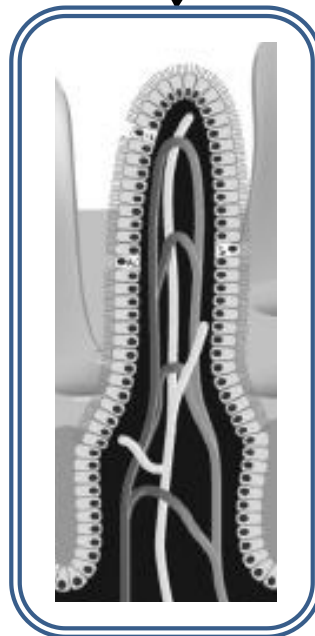
Label this diagram of a villus – show the lacteal, blood capillary and epithelium.

List three features of an alveolus that make it an ideal structure for gas exchange.

The lacteal transports

The capillaries transport

- 1
 - 2
 - 3
- _____



- 1
 - 2
 - 3
- _____